

WELCOME TO  
THE MOUNT ROSKILL  
GRAMMAR SCHOOL  
PARENTS OF NEW STUDENTS  
INFORMATION EVENING



# ***INFORMATION EVENING***

School Mission and our Vision for Students

Strategic Goals and School Expectations – LOTS

School Profile and Achievements

Facilities

The Organisation of the School Day

Contacts

Grouping of Students – Subject Classes

Houses

Grouping of Students - Forms

Introduction for New Students

– Orientation and Peer Support

Student Support Services

Courses

Assessment

Reporting

Communication

Activities

Any Questions



# MISSION STATEMENT

*Mount Roskill Grammar School is to provide the learning environment necessary to develop the personal potential, social responsibility and respect for individual and cultural differences of all students and staff within a professional framework*



# Our Vision for Mount Roskill Students

**We want to develop confident capable citizens who are:**

- **Successful academically**
- **Adept lifelong learners**
- **Confident in relating to others**
- **Willing to go beyond success for self to help others**



# Strategic Goals

## Seven Strategic Goals

- Quality achievement for each student
- Developing confident connected citizens
- Developing able innovative thinkers
  
- Supportive orderly environment
- Ongoing Professional learning
- Partnership with our community
- Development of ICT within the learning process





*"The classroom is the heart of academic achievement"*

## OUR NON-NEGOTIABLE CODE OF BEHAVIOUR

Respect for  
**LEARNING**

Be *on time* and *attend all lessons*  
Come *prepared* for the lesson  
Remain *on-task*  
Record and complete *homework*

Respect for  
**OTHERS**

Speak to and *treat others positively*  
Respect the *property* of others  
Keep our *learning environment safe*  
*Behave well* so that others can stay on-task

Respect for  
**TEACHERS**

Follow the *instructions* of teachers  
Speak to and treat all staff with *respect*  
Obey the *school rules*  
Follow this classroom's *special procedures*

Respect for  
**SELF**

Wear our *uniform* correctly  
Do your *best work* at all times  
Try to *learn new things*  
*Ask for help* when you need it

L

O

T

S



# School Profile and Achievements

Roll: 2250

Ethnicity: 70 nationalities

Results:

Secondary School of the year 2002

Academically out performs most schools

2007 - 55 Subject New Zealand Scholarships

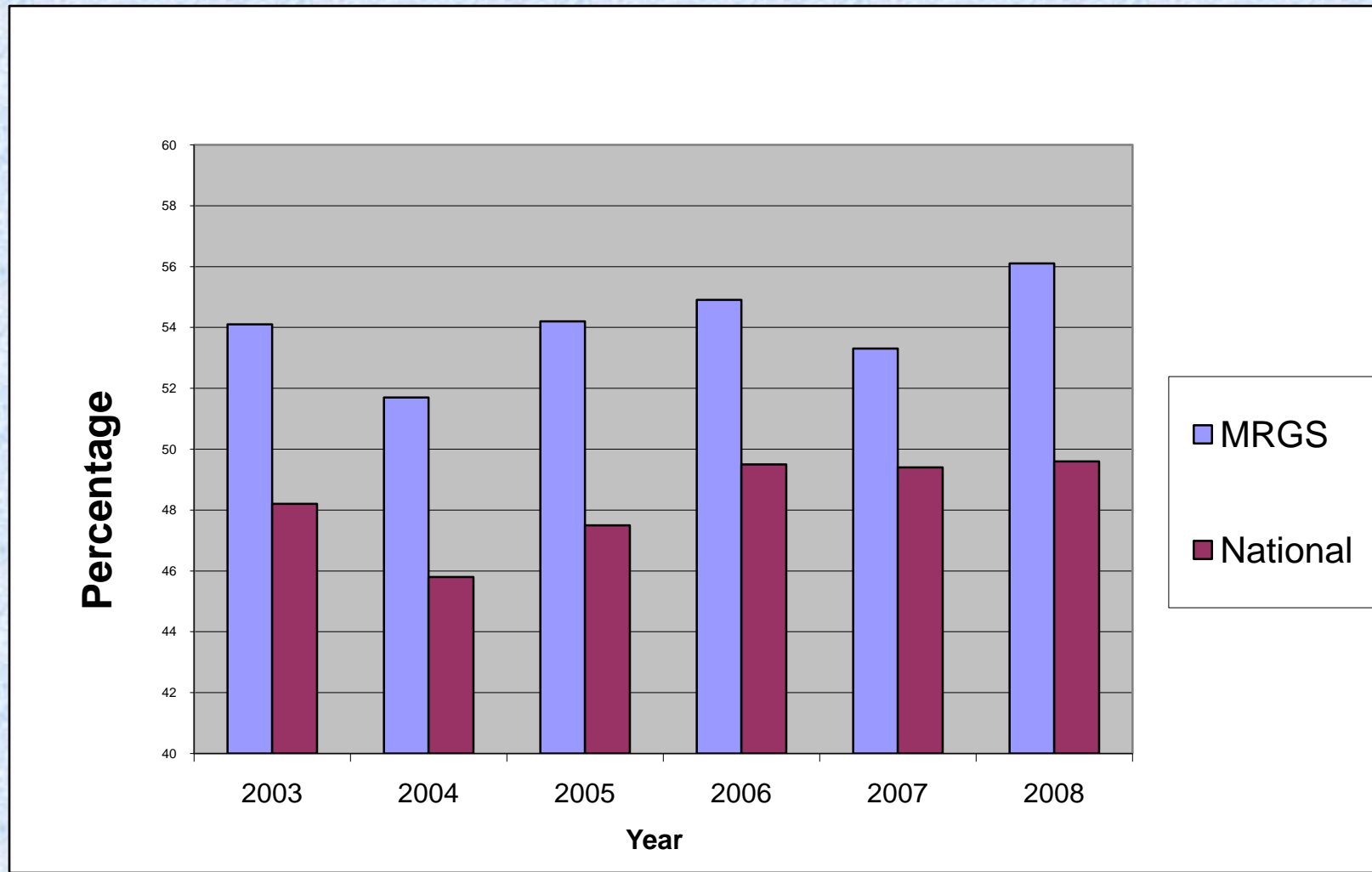
Includes premiere scholar Chuan-Zheng Lee

2008 - 75 Subject New Zealand Scholarships

Includes premiere scholar Timothy Vogel

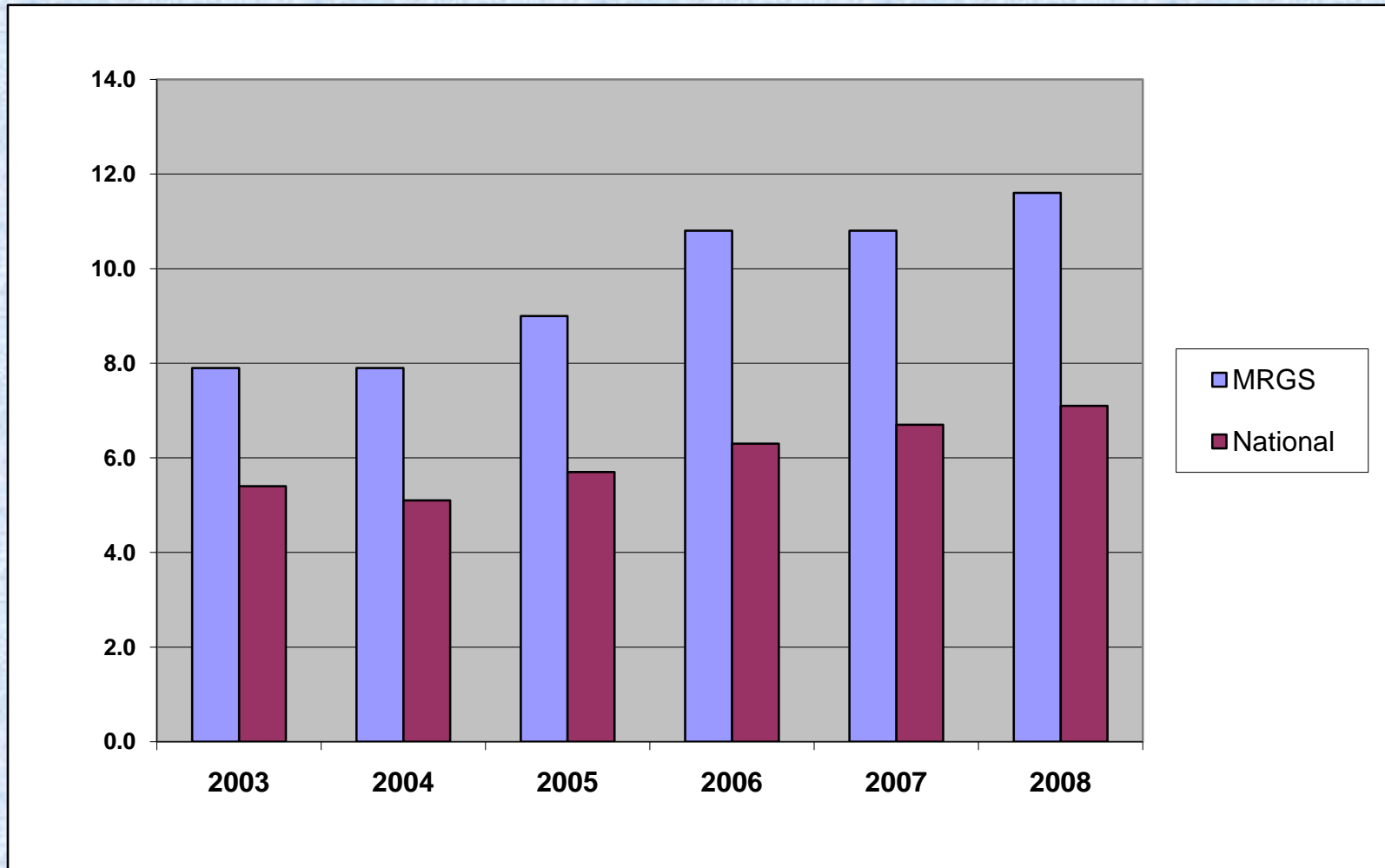


# Percentage of Year 13 Gaining University Entrance



# Excellence Rates in External Achievement Standards

## MRGS vs National (%)



**FACILITIES**

**FITNESS CENTRE**

**VISUAL ARTS DEPT**

**SPORTS FIELDS**

**SCIENCE BLOCK**

**HOCKEY  
TURF**

**PERFORMING ARTS  
STUDIO**

**TENNIS  
COURTS**

**TECHNOLOGY  
WORKSHOPS**

**CLASSROOMS**

**SWIMMING POOL**

**COMPUTING  
ROOMS**

**MUSIC SUITE**

**GYMS**

**FOOD  
TECHNOLOGY AND  
CATERING ROOMS**

**WHARE**

**NEW  
DEVELOPMENTS**



# SCHOOL ORGANISATION

## START AND FINISH TIMES

8-37 start (for 8-40)

3-10 finish

Wednesday later start 9-17 (for 9-20)

Roll Check

1

SHAPE OF THE DAY

2

Interval

3

4

Lunch

SSR

5

(Rotations on Tues + Fri)



# COMMUNICATION AND CONTACT (1)

## SCHOOL ADMINISTRATION

**PRINCIPAL**

**MR. G. WATSON**

**SENIOR MANAGEMENT**

### DEPUTY PRINCIPALS

**MRS J BARKER**

**MR K HALL**

**MR M D LETT**

**MR M LORETZ**

**MRS M HEYWOOD\***

**MR J WILKINSON**

( Acting for \*Ms K THOMAS  
currently on study leave )

*First Contact  
Discipline  
Behaviour*

**HEADS OF DEPARTMENTS**

*Subject Enquiries or Concerns*



# COMMUNICATION AND CONTACT (2)

## LEVEL CO-ORDINATORS

Year 9 – Mrs Burns, Mr. Collis

***Enrolment, Class placement and changes  
Banding***

## HOUSE LEADERS

***Responsible for:  
Form Classes, Student Support  
Discipline  
Assemblies and House Activities  
Sports Days***



# GROUPING OF STUDENTS

For teaching, students are in a core class or subject group

Junior level – Students are in teaching groups for their core subjects. Each has a number i.e 902, 1015 etc

Senior level – Students are grouped in subject classes -

**11 ENG**

*Year Level*

*Subject Code*



# EIGHT HOUSES

	Name	Colour	Letter
Each House has Two House leaders	BAXTER	Blue	B
	BLAKE	Gold	G
	HILLARY	Black	H
	MANSFIELD	Red	M
	NGATA	Silver	N
	RUTHERFORD	Mauve	R
	SHEPPARD	Orange	O
	SAVAGE	Jade	J



Each Student is  
identified by  
name AND form  
class

HBYL = Form  
Class

Jane Tavai HBYL

H = Hillary House

BYL = Form  
Teacher  
Code



# Form Class

For  
Attendance, Administration and Pastoral work

Meets for:

Roll Check – morning

SSR - afternoon

All students in a form are from the same House

Form Groups  
are vertical  
= students are from different year levels

SSR = Sustained Silent Reading



# Form Class

Roll Check and SSR – an attendance register is taken

*If a student is ill or absent for a valid reason they must bring a note addressed to the Principal to explain the absence.*

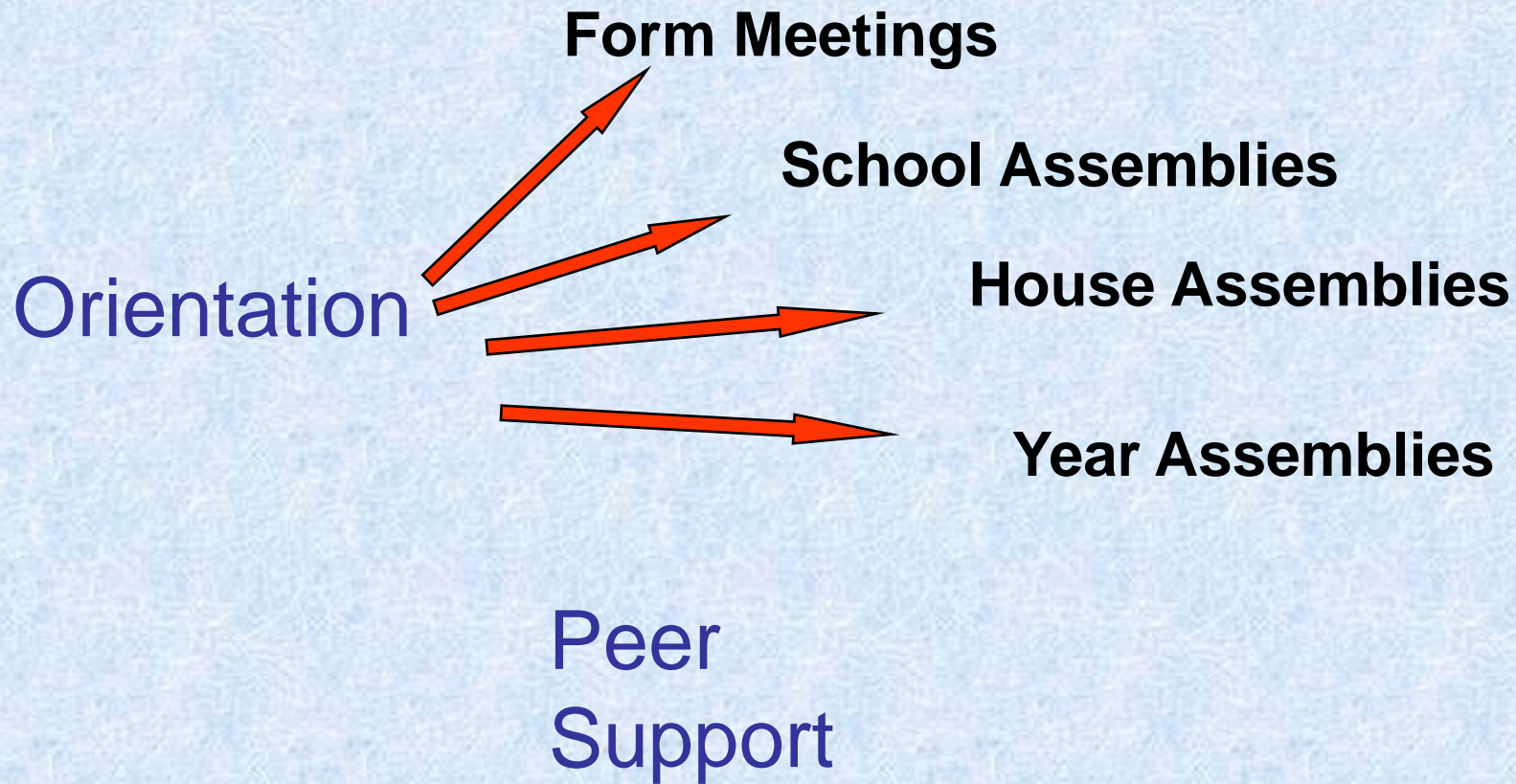
The form teacher will keep a track of the student's attendance

Also an attendance roll is taken in every lesson

Unexplained absence from school or classes  
is noted and followed up.



# Introduction to the School for New Students



**STAFF FACILITATORS**

**TRAINING**

**TUTORS**

**YEAR 9 STUDENTS**

**YEAR 13 STUDENTS**

# PEER SUPPORT

**ORIENTATION**

**TERM ONE**

**PEER  
RELATIONSHIPS**

**SOCIAL SKILLS**

**4 SESSIONS**

**FOLLOW-UP  
SESSIONS  
DURING  
THE YEAR**

**FRIENDSHIP**



# STUDENT SUPPORT SERVICES

Academic

## ENGLISH FOR SPEAKERS OF OTHER LANGUAGES

English help for new arrivals  
Induction programmes  
Continuing Language support

Individual Learning programmes, Learning referrals  
Study support, Reading Programmes, Teacher Aides

LEARNING  
EXTENSION

## ALTERNATIVE LEARNING PROGRAMME

Home room – individualised programmes  
for students who need extra support

## ENHANCED LEARNING OPPORTUNITIES

1 class in year 9 and 10, selected students, exposure to a  
wider range of learning experiences



# STUDENT SUPPORT SERVICES

Pastoral, Personal. Vocational

**GUIDANCE COUNSELLING**

**Full-time trained counsellors  
Self-referrals and consultations  
Peer mediation  
Health Education Programme**

**Nurses  
Medication support  
Sick bay**

**MEDICAL CENTRE**

**Careers Advice  
Tertiary Information and contacts  
Work Experience  
Vocational courses  
Transition arrangements**

**CAREERS AND TRANSITION**



# OTHER SUPPORT FOR STUDENTS

Resource Teacher  
Learning and  
Behaviour (RTLB)

Youth Worker

Student  
Wardens

Homework  
Centres



# CURRICULUM AND COURSES

Year 9



core subjects and rotations

*Core*

*English, Maths, Social Studies, Science, P.E Language Option*

*Rotations*

*Technology, Computing, Business, Health, Music, Art, Graphics, Food Tech*

Year 10



core subjects and options

Year 11-13



Subject choices



# ASSESSMENT

CLASS TESTS AND DRILLS



ASSESSMENT FOR  
LEARNING

SCHOOL WIDE TESTS AND  
EXAMINATIONS



(Mid year and End of Year)

ASSESSMENT FOR  
ACHIEVEMENT, CLASS AND  
SUBJECT  
PLACING, COURSE  
QUALIFICATION

NATIONAL EXAMINATIONS  
AND ASSESSMENT



( Internal and External )

ASSESSMENT FOR  
QUALIFICATION, SUBJECT  
CONFIRMATION, TERTIARY  
ENTRANCE



# COMMUNICATION AND CONTACT

## Reporting to Parents

### ***WRITTEN REPORTS***

#### **Progress Reports :**

**Junior -- 17<sup>th</sup> March**

**Senior – 27<sup>th</sup> March**

#### **Senior Interim Report :**

**End of Term Three**

#### **Reports:**

**Senior End of Term Two**

**Junior Term Two**

**Senior and Junior at End of Year**

### ***REPORT EVENINGS***

**Junior**

**19<sup>th</sup> March**

**and Term Two**

**Senior**

**2<sup>nd</sup> April**

**and Term Two**



# COMMUNICATION AND CONTACT

## ***Newsletters***

Person-to-person

- House Leaders
- Form Teachers
- Senior Staff

## ***Letters home***

Office – Mrs. Bonnie Wills - Reception

- Mrs Elaine Hyland- Attendance

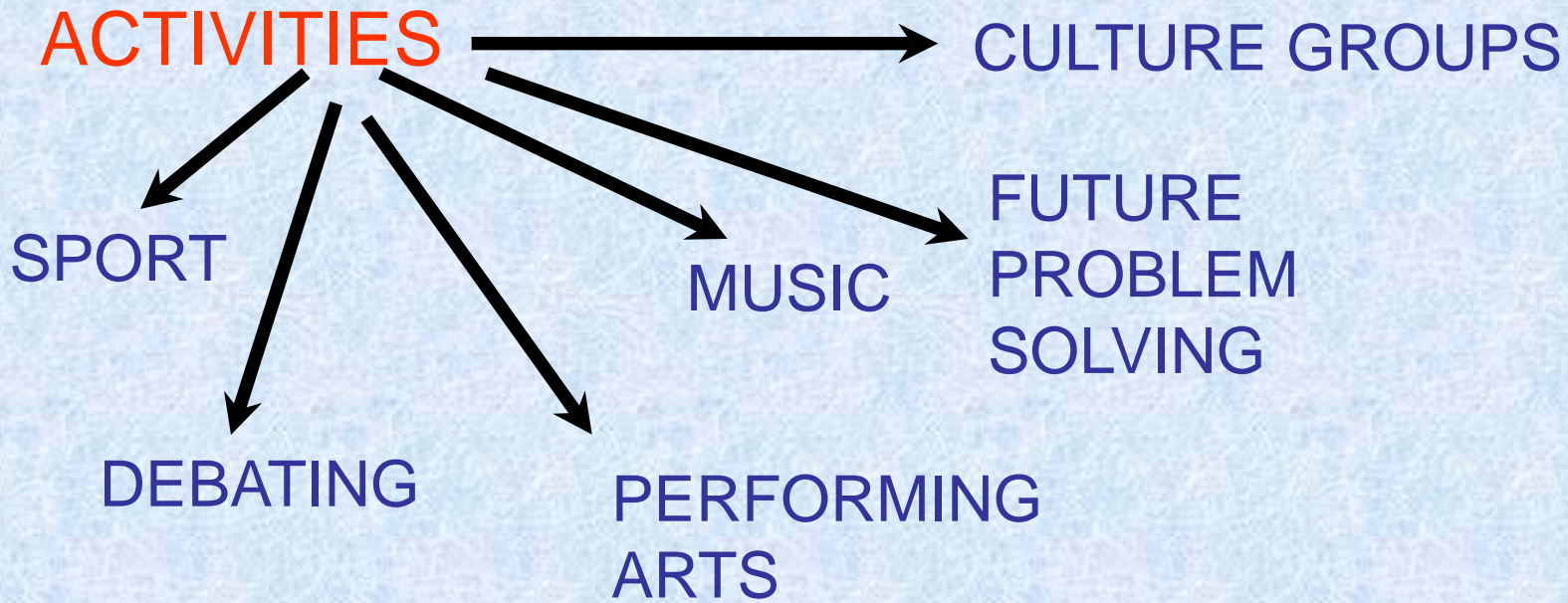
## ***Website –***

***[www.mrgs.school.nz](http://www.mrgs.school.nz)***

***Testimonials***

***Records of Learning***





## Education Outside the Classroom



ANY QUESTIONS

