



# Newsletter

## FEBRUARY 2012

**Principal:** G Watson, MSc (Hons), MEd.Admin (Hons)  
**Phone:** 621-0050  
**Website:** [www.mrgs.school.nz](http://www.mrgs.school.nz)

Frost Rd  
Mount Roskill  
Auckland 1041



### In this Issue:

## Welcome to New Students and Staff

Outstanding Academic Results

News from the Board

Parents of New Students Meeting

Prefects

Sport

Important Dates for your Diary

# NEWSLETTER – FEBRUARY 2012

Nga mihi nui ki a koutou

I would like to warmly welcome all the families who have joined our school community this year. We look forward to getting to know you as your son or daughter becomes involved in the life of the school. It would be great to see you at the Parents of new students meeting on Thursday 23 February 2012.

School has started smoothly and there is a real sense of 'learning purpose' in the school. I would like to thank the staff who have worked hard over the last few weeks to ensure students are welcomed into the school and learning programmes are up and running from the first lesson. Thank you to all families who have sent their children to school so well prepared for learning. Your support makes a huge difference!



At the start of the year we welcomed nine new teaching staff. I am delighted with the quality and the experience of the teachers who have joined us. We welcome our new Deputy Principal Mrs Julie Small who is a skilled and experienced school leader.

The NCEA results for 2011 are very pleasing. Congratulations to the hundreds of students who gained Merit or Excellence endorsements, making 2011 our best year ever for quality achievement in NCEA. It's great to see significant improvement in Level 1 literacy achievement after a targeted assistance programme in this area. One of the school goals for 2012 is to extend this approach to lifting NCEA pass rates.

At Mount Roskill Grammar School we have an expectation of success for all students. We specify that success in our vision for students to become successful powerful learners who are active and responsible citizens. I look forward to a year in which we all commit to challenges, do our best and have an attitude of improving and learning. These are the attitudes of Sursum.

Ki nga taumati!

Greg Watson  
**PRINCIPAL**

## STAFF

We welcomed 9 new teachers for the start of 2012 year: Julie Small (Deputy Principal), Natalie Willcox (PE Department), Brian Divall (Social Sciences Department), Stephen McCracken (Science Department), Laura Leman, (Maths Department), Callum Christopher (English Department), Elaina Anderson (Campus Maori Co-ordinator), Gabriel Raluy (Languages Department) and Kathryn Shearer (Technology Department).

## **NEWS FROM THE BOARD**

Welcome back to school. The Board of Trustees encourages all parents to be actively involved in their children's education. You are always welcome at the school and at Board meetings. The BoT meetings are held monthly on a Monday at 5pm. Please check the MRGS website for the actual dates and contact details for BoT members.

2011 had some notable successes which included Scholarship results and NCEA results which are higher than other similar schools. Professional learning circles enabled teachers to focus on effective teaching practices.

Partnerships were developed with He kakano to enhance learning opportunities for Maori students. Peter Leilua was employed to work across the campus to support Pasifika students and families. There were outstanding achievements in the cultural and sporting arena. In the area of school infrastructure, Passion It has been engaged to manage the ever growing use of computers and the software which is needed to run the school. This will enhance the use of e-learning in the school.

Archemidia have been engaged to draw up the 10 year development plan. Their role as architects is to look at the overall site plan for the school and make plans in consultation with the wider school community about how to best utilise the Ministry's funds for development of the school.

The BoT is also committed to developing large scale fund raising ventures to fund some of the needs of the school. If you have any skills in this area or know of someone who may be able to assist then please contact the school.

The BoT expects that the school will continue to build on the above developments from 2012 and continue to provide excellent learning opportunities for your children.

The Board of Mt Roskill are an elected and co-opted group of people whose role is to govern the school. We welcome and are always available for parents to approach us.

Marjet Pot  
Chairperson BoT MRGS

## NEWLY APPOINTED DEPUTY PRINCIPAL INTRODUCES HERSELF



As a recently appointed Deputy Principal I am looking forward to working with our Mount Roskill community. Having just left Hamilton to take up this appointment, my family; two sons and my husband, our Beagle dog, Baxter, and our cat Laurel are finding Auckland an exciting place to be.

As a teacher who began teaching at a young age I have always been involved in education. My teaching subjects are Food, Fabric, Physical Education, Catering and Hospitality, Marketing and Social Studies. This year I am teaching a Year 9 Social Studies class.

As part of my leadership portfolio at Mount Roskill Grammar School I will be working in the area of Curriculum development which encompasses teaching and learning. I believe our learning programmes must be responsive to meeting student needs to ensure every learner can achieve success. It is the quality of engagement that helps our young people become fully immersed in their learning. I look forward to supporting both teachers and students as they undertake their own journey in learning to be the best they can be.

I have been very fortunate during my career to have several experiences which have helped shape me as an educator. Some of these highlights were: the opportunity to bring the City and Guilds qualification to a Secondary school, winning the 'Excellence Award' for teaching in my subject, having mentors to guide me in my thinking, being a National facilitator in curriculum, becoming a restorative practice facilitator and having experiences where I was part of a team where the school results significantly improved on a sustainable and consistent basis. I have also valued the opportunity to work with and grow young students to develop their leadership skills by working with them on a weekly mentoring basis.

In evaluating my next career move I was seeking a leadership position within a team where success and achievement for students was a critical component of the school ethos and was therefore excited and delighted to be appointed to this role of Deputy Principal at Mount Roskill Grammar School. I have found our students and staff to be warm and friendly and believe the school has a very positive vibe about it.

I look forward to getting to know you as I learn about our school community over the next few months.

Warm regards

Julie Small  
Deputy Principal

## PREFECTS



The School Prefects appointed for 2012 are:

Head Prefects: **Shilpan Patel & Alana Miller**

Deputy Head Prefects: **Akash Kumar & Renae Toelau**

The School Prefects are:

**Timothy Bulmer**  
**Daniel Christev**  
**Karan Dasgupta**  
**Matthew Davidson**  
**Joshua Iosefo**  
**Jonah Kim**  
**Athurva Kulkarni**  
**Patrick Lee**  
**Henry Lin**  
**Levaula Matafai**  
**Hayden Ng**  
**Khan Rogers**  
**Krishant Sen**  
**Wesley Yep**  
**Yousef Yousef**

**Akhila Achanta**  
**Kuenita Afele**  
**Alexia Carbines**  
**Nirusha George**  
**Shilpika Kamath**  
**Nigaah Khan**  
**Oshan Malifa**  
**Shannan Morgan-Manukau**  
**Sarah-Lyng Muthiah**  
**Siobhan O'Connor**  
**Michelle Pravin**  
**Taina Puloka**  
**Carol Tang**  
**Chelsea Te Whare**  
**Vanessa Wang**

## PARENTAL DONATIONS

Invoices will be sent out later this month (February) for the parental donation, sports and activity fees. The parental donation is \$180.00 per student or \$300.00 per family. Every effort is made to keep school costs to a minimum but to ensure that we offer quality educational opportunities we encourage payment of these costs. The parental donation assists in meeting the costs of providing classroom and sports equipment. If you have difficulty in paying the total cost at the beginning of the year, please contact the Accounts Office to make alternative arrangements.

## CAMPUS SCHOOLS GET-TOGETHER

On Monday 12th March the teachers, therapists and other staff from Mt Roskill Primary, Mt Roskill Intermediate and Mt Roskill Grammar will be meeting to review the exciting links and innovations we are developing on our Campus.

The three Campus schools have been working closely together for four years now and the development which has taken place is having a huge and positive impact on the learning of our students.

We are all learning together and this meeting on Monday 12th is an opportunity to review the successes we have had and to confirm our direction for the next two years. The three schools will close at 2.30pm on this day. Any child who cannot be picked up is able to wait at school and will be supervised in the normal manner.

## Outstanding Academic Results

### MRGS does it again!

2011 was yet another outstanding year for MRGS in the NCEA examinations. Our students have again performed to the highest levels of quality. We are pleased to share some highlights and features of our NCEA results.

#### Yr 13 Excellence:

	Excellence Credits (in 2011)	Total E Cr at L3
Hannah Widjaja	84	86
Audrey Tay	81	91
Lei Yin	81	81
Jessica Wei	79	79
Gloria Fraser	74	74
Dheeraj Gopalakrishnan	71	71
Abhishek Pillai	71	71
Arjun Suyam Prakasam	71	71
Don Li	68	68
Harry Thomson	66	71
Krithika Prahallad	64	74
Husain Suterwala	61	61
Khyati Sharma	59	59
Gaurav Kalra	56	56
Shreya Handa	55	62
Jiaxin Liang	54	54
Naveen Vemulapalli	53	53
Sritej Nandagiri	51	51
Manasi Deshpande	51	61
Ivanka Feng	51	51
Rohit Tirumazhisai Anandh	50	50
Shireen Gujral	50	61
Aarun Li	50	74

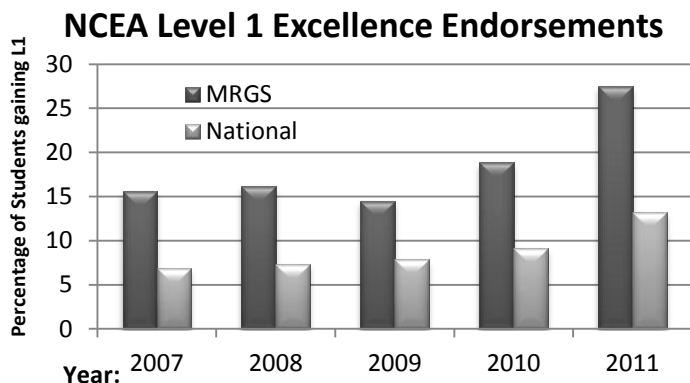
#### Yr 12 Excellence:

	Excellence Credits (in 2011)	Total E Cr at L2 or ↑
Shiva		
Kalyanasundaram	92	92
Wesley Yep	77	113
Anka Yu	73	73
Pooja Bharamappa	72	72
Anusha Malavalli	68	68
Jenny Lee	67	67
Sandane Samarakoon	66	66
Angela Ko	65	101
Athurva Kulkarni	64	79
Dayan Kuruppu	63	63
Shenali Lewke Bandara	62	62
Shilpan Patel	61	94
John Law	59	59
Akshat Malhotra	59	59
Hafsa Iqbal	57	57
Jude Fernandes	56	56
Ewen Wong	55	55
Iris Lin	54	54
Scarlett Yi Huang	54	54
Mei Mei Ho	53	53
Prajakta Niphadkar	52	61
Roop Bhatt	51	61
Annyssia Gonsalves	49	52

#### Yr 11 Excellence:

	Excellence Credits (in 2011)	Total Excellence Credits at L1 or higher
Hannah Yang	112	126
Stephen Li	105	118
Cindy Ou	104	114
Meghna Shelke	104	113
Akshat Chugh	101	101
Ayesha Nadat	98	98
Ahana Palande	97	97
Cassie Khoo	95	101
Jordan Lapwood	94	94
Helen Wyeth	93	93
Arnab Sen	93	93
Geon-Hoo Park	92	92
Sophie Galea	91	91
Kamshika Umasuthan	91	91
Diana Ng	88	105
Neha Mamidi	87	97
Sunil Penumarthy	86	86
Grace Wang	86	86
Asheer Ahmad	85	97
Jessica Allan	85	100
Veronica Lumaug	84	84
Raymond Huang	83	83
Rohan Modak	83	83
Angela Yen	83	83
Peiling Su	83	83
Lucas Chen	83	83
Kartik Yellapantula	78	78
Soo Ling Tran	77	77
Carmen Ng	75	75
Reina Li	73	73
Simran Sandhu	72	72
Vignesh Krishnamoorthy	71	71
Cindy Luo	70	70
Katie Hung	70	70
Sushmitha Deshpande	69	69
Jay Pandya	68	74
Tony Shi	68	68
Janelle Fernandes	66	73
Richard Xu	66	85
Luke Winny	65	70
Wilson Liao	65	65
Adriene Grafia	64	68
Isha Jain	63	63
Archana Ravichandran	62	62
Peiqiong Su	61	61
Sai Kodali	61	61
Nikhil Gupta	61	61
Niharika Manchineela	60	60
Yashveendra Krishna	60	60
Erin Steel	59	59
Alan Cheng	59	59
Brendan Lim	59	78
Meghana Bommena	58	58
Aashna Singh	57	57
Sohail Abdulla	57	57
Braidon Walsh	57	57
Zheng Qu	57	57
Madushi Kalinga	56	56
Yin-Tuan Pang	56	56
Karan Banker	56	56
Asim Ansari	56	56
Theresa Carbines	55	55
Meghan Daly	55	55
Beau Xu	55	55
Jonathan Guo	54	70
Edwin Chow	54	54
Jackson Chan	54	54
Viliani Tutone	53	65
Priyanka Reddy	53	53
Andrew Cao	51	51
Himani Bhatia	51	51
Akshay Jagmohan	51	51
Lorena Lu	50	50
Zhan Xiong	50	50
Rohit Rayapeddi	49	55
Jenny Huang	49	53
Sagar Malakappa	47	51

*Congratulations to all Students gaining Excellence Endorsements in NCEA*

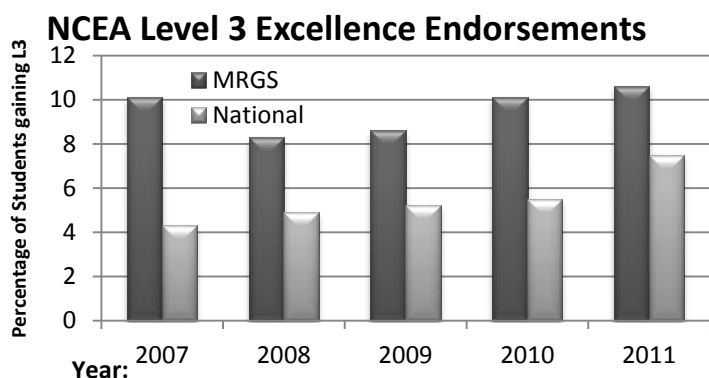
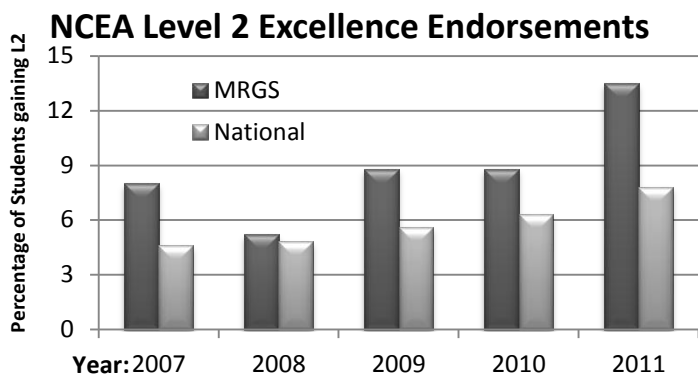


In 2011, we saw our NCEA Excellence Endorsements soar higher than ever before at all three levels of the national qualification since the endorsement was introduced in 2007.

More students than ever before from Mt. Roskill Grammar School gained Excellence Endorsed National Certificates last year. This is testament to the high quality of teaching and learning that continues to be common place at the school.

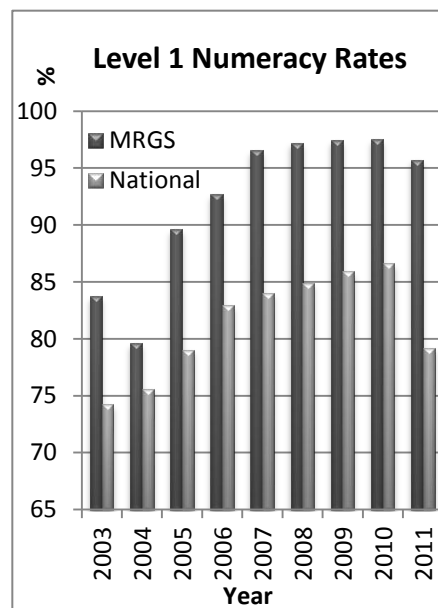
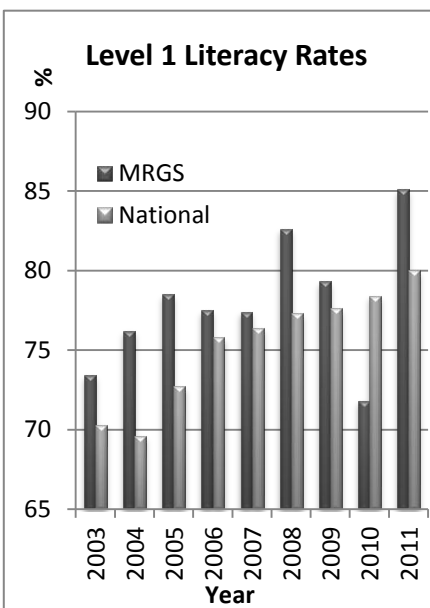
The MRGS Merit Endorsement rates also remained high indicating that 2011 was our best year yet for quality achievement in NCEA.

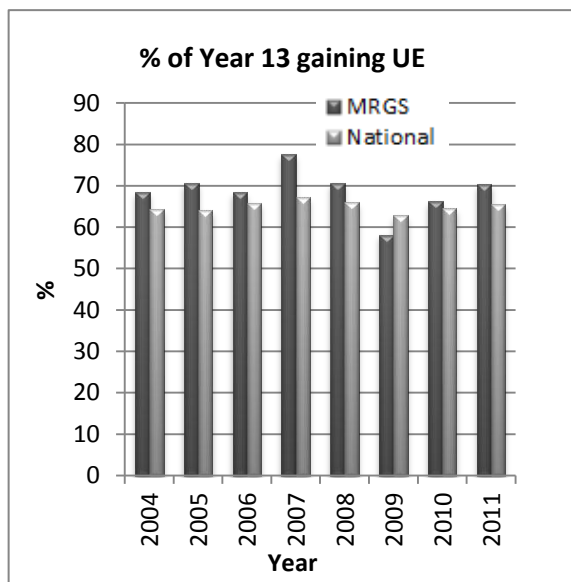
To gain a merit endorsement a student must gain at least 50 credits at the merit or excellence levels. To gain an excellence endorsement, a student must gain at least 50 credits at excellence level across all the achievement standards they have sat in their selected subjects and at their level or higher.



### **MRGS Literacy Rates bounce back in 2011, Numeracy remains very high.**

One very pleasing feature of the NCEA results of 2011 was the upturn in the number and percentage of students gaining the level one literacy requirement. After a disappointing literacy result in 2010, the school concentrated its efforts on lifting literacy skills and providing targeted assistance to students with literacy needs. This has paid off. In numeracy also, the MRGS success rate remains very high. Even though the way this was measured in 2011 changed, the MRGS numeracy level well exceeds the national expectation.





In 2011, the percentage of Year 13 students gaining entry to Year 13 returned to the levels that the school has been used to. Along with the results from 2005 and 2008, the 2011 result was the second highest MRGS has seen.

There is room for improvement in this area however and with improved processes for academic monitoring and mentoring, the school hopes to see the percentage of its year 13 gaining entrance to university increase still further in 2012.

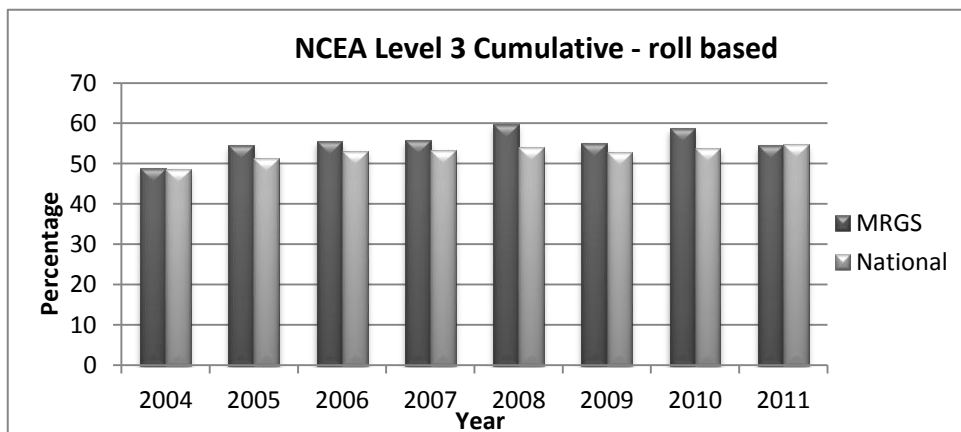
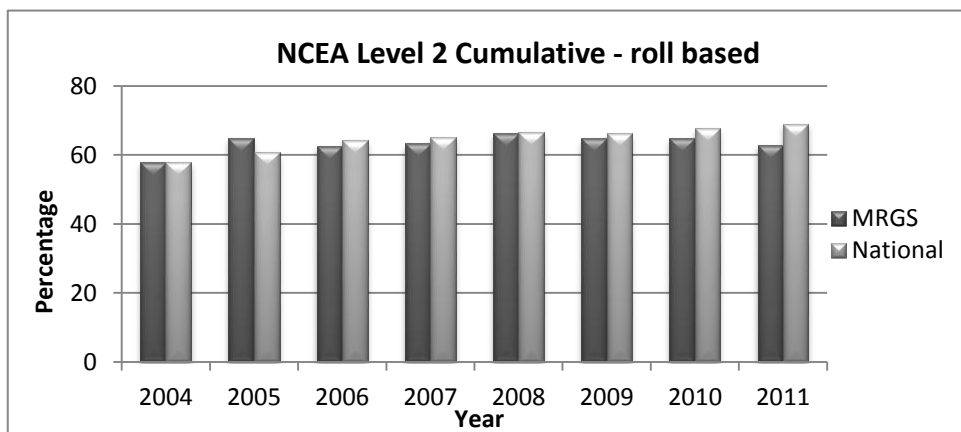
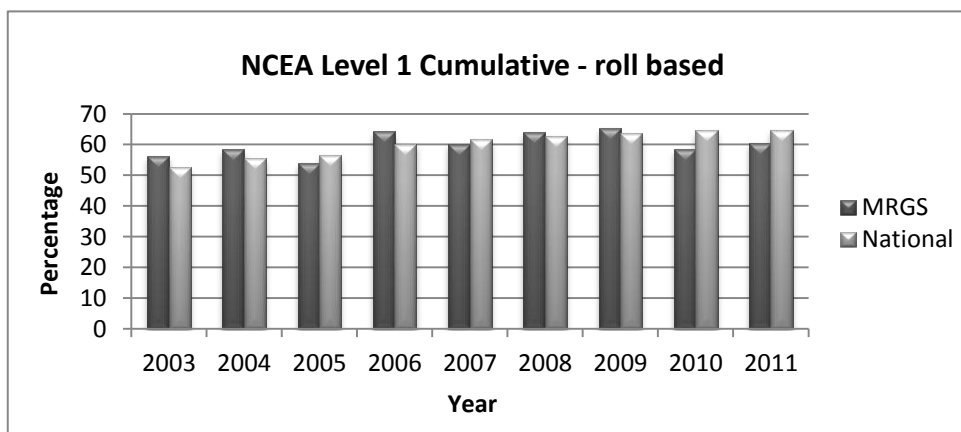
Statistics for students leaving MRGS well qualified have traditionally exceeded national expectations and this has been true for the full range of ethnicities at the school.

***Pass Rates indicate need for closer monitoring of achievement for those falling short.***

While the quality of achievement at Mt. Roskill Grammar continues to climb towards the heights, there remain some features of our results that we would like to improve.

In recent years, the percentage of our students passing their Level 1 and 2 NCEA certificates by the end of the expected year (ie. Level 1 passed by the end of Year 11 etc) has marginally lagged behind national levels. In 2012, closer monitoring of the academic progress of all students will occur.

Also, students and parents will be provided with regular information about academic progress so that action can be taken to ensure these rates increase.



## NEW STUDENTS WELCOMED



On Thursday 2 February we welcomed all our 450 plus new students. They were called into the Hall, challenged and greeted by our Kapa Haka Group, Mr Watson and senior students. Mr Hays replied on their behalf. Students were then sent off to meet with their House leaders and the Year 13 students in their House. They were taken on a tour round the school and shown how to read their timetables before going off to lunch and their first Peer Support session in the afternoon.



***Two of the New Year 9 students who attended the Powhiri have written their reflections on the event ....***

We rose...

Solemnly we stood, gathered shoulder to shoulder as the eerie silence penetrated over us. We were nervous, though curious as we sat, unsure of what was to happen. A single note spread rapidly capturing the hall's attention slicing through the silence. We held our breaths as a low tone rose from its depths

and exploded into a loud, strong and fierce waiata. Surprised at such a welcome, we burst into applause and our gratitude flowed from within. The ice-cold atmosphere and silence had long gone and the warmth of the welcome was felt in every corner of the room. As we sat down my heart thumped with excitement instead of nervousness. *This was my school now.*

In Te Reo Maori a few words were exchanged. Then we were signalled to stand and sing. It was a joyous, rhythmic, Maori song. As it finished, the principal stood up and welcomed us, this time in English.

The powhiri was the beginning of our Mount Roskill journey; a journey filled with expectations, new obstacles, and hopefully some fun along the way. As Year 9s, we accept this challenge and embrace the start of our Mount Roskill journey with a great big smile.

- By Aditi Ramalingam & Athulya Rathnayake

## **PARENTS OF NEW STUDENTS MEETING – Thursday 23<sup>rd</sup> February at 7pm.**

This meeting is an opportunity for the parents/caregivers of year 9 students and other new students to find out about the school organisation, values and the learning opportunities which exist within the school. Members of the Senior Leadership Team, Academic and Pastoral Leaders, will be present to meet with you and answer any questions. Tea and coffee will be served after the meeting. The meeting will be held in the school library and will begin at 7pm.

## COUNSELLING DEPARTMENT

A warm welcome to all new students and their family from the Counselling Department! Our four counsellors offer a confidential counselling for students, and we welcome referrals from parents. We deal with a wide range of issues, including loss and grief, depression, family stress, anxiety and harassment. Please email the Head of Counselling for an appointment: [Margaret.hoogendoorn@mrqs.school.nz](mailto:Margaret.hoogendoorn@mrqs.school.nz), or phone extension 825. We are all members of the New Zealand Association of Counsellors, and abide by the NZAC Code of Ethics.

This term our Year 9 students will be part of two exciting programmes:

**A. Each class will take part in two **Anti-Harassment workshops** run by two counsellors.** Experiencing harassment and bullying can cause distress for teenagers, and can make it hard to concentrate at school. At MRGS we take harassment seriously. Students often report they used to be scared to tell on harassment as they feared “narking” might lead to the bully getting punished, and this made the harassment even worse. However, at our school we can use mediation or restorative meetings but there are also methods of stopping harassment where the “teller” is not involved at all. The identity of the “teller” can be kept confidential!

To find out more about our school’s passion for maintaining a safe and caring environment, we invite you to listen to the podcast of two recent radio broadcasts: [www.radionz.co.nz](http://www.radionz.co.nz), Asian report, dated 24 January and 31 January.

### **B. Travellers programme**

All Year 9’s will be invited to fill out a “Travellers” questionnaire, a computer-based list of questions. All information will be kept strictly confidential. We use the results to select approximately 80 students who will take part in a small-group resiliency-building programme with a counsellor. This 16-hour “Travellers” programme helps students face life and its challenges with confidence and new skills.

This programme was designed by Pauline Dickinson from the University of Auckland, and we are proud to have been part of this wonderful programme since its start 10 years ago when we piloted the programme.

For more detail, please check the chapter on Travellers on our school website: [www.mrqs.school.nz](http://www.mrqs.school.nz), Student Services, Counselling.

## HEALTH AND WELLNESS CENTRE – ‘TE WHARE WAIRA

There are three registered nurses based at student services and we offer a variety of confidential services to all students. We do a comprehensive health and well-being assessment on year nine students whose family or carers have given consent. We run a Student Health Council which is made up of students who have an interest in promoting health and wellbeing in everyday life. All young people are entitled to free dental care up to the age of eighteen. The school nurses can advise you on where to go for free dental care. We recommend that any young person who has a medical condition such as diabetes or asthma should have the annual flu injection. This can be given at the family doctor, usually from March. If your child is unwell or has flu like symptoms or vomiting and diarrhoea or red sore eyes we recommend that you keep them at home and take them to your family doctor if needed.

Please contact us if you would like to discuss any health matters or have any concerns or queries. More information about us and our contact details are on the school website under Student Services.

## **UNIFORM**

MRGS regulation uniform is the only school uniform that may be worn. The complete uniform requirements are available on our school website. If you are purchasing second hand uniform from past pupils please ensure it has an Elizabeth Michael label. If you have any concerns or queries about uniform, please contact Mrs Barker on 621 0050. For security purposes please ensure your child's uniform is clearly named.

## **UNIFORM SHOES**

Only full foot, plain black leather, laceup school shoes are allowed. Ballet slippers, slip ons and canvas shoes are not uniform shoes and will not be accepted. If you are unsure about which shoes are allowed please contact Mrs Barker before making your purchase.

## **UNIFORM SHOP**

The MRGS uniform shop is open Mondays and Thursdays from 8.00 am to 9.00am and 3.00pm to 4.00pm. The uniform shop is now located at Gate 3 Frost Road.

## **ATTENDANCE**

Teachers mark their roll on the computer every period. This allows us to monitor attendance statistics for both individual and groups of students more frequently and closely. If you have any concerns about attendance or want to report an absence, please phone Mrs Hyland, Attendance Officer, on 621 0069. Please phone on the first day of your child's absence. Students are expected to bring a note explaining their absence on their return to school. Lateness to school is always a concern and we would value your support to help us address this when it is brought to your attention. It is our experience that left unaddressed, lateness can become truancy.

## **STUDENT EXCHANGE SCHEMES**

Students are encouraged to participate in exchange schemes during their time at school and Ms Harding in the Admin office has information about exchanges with our sister school, Seirinkan High School in Japan and through AFS and EF there are opportunities to stay in other countries. Please contact her for more information on 621 0050 ext 756 or [jean.harding@mrqs.school.nz](mailto:jean.harding@mrqs.school.nz)

## **NZQA FEES COLLECTION 2012**

All senior students and 1001 students must pay their NZQA Fees (compulsory) to the accounts office between Wednesday 9th May and Friday 11th May. These fees must be paid so that any credits a student achieves through either Unit or Achievement Standard assessments will be recorded on a student's record of learning. If not paid, the credits will not be released to the student.

The Fee for the majority of students will be \$76.70. However financial assistance is available to students whose parents/guardians receive a Work and Income Benefit or have a Community Services Card. Financial assistance forms can be collected from the front office, accounts office or from Mr Parratt in the Commerce Department next to H6

## PHYSICAL EDUCATION

Physical Education is a compulsory subject at Mt Roskill Grammar from Year 9 – 12 where all students have two periods per week. All students are expected to wear correct PE uniform for all lessons. Please ensure your son/daughter has their uniform clearly named in full. They may wear a combination of the new or old PE uniform but not uniforms reserved for sport teams.

We all know the benefits of exercise and eating properly, we have read it, most of us have acted on it, yet we still get many parents signing letters to get their child excused from PE. Please think about what you are doing before signing – there are many things in life we do not feel like doing but most often, once we have done them we are glad we did.

If your child is well enough to be at school then they can still take part in some of the PE lesson. The Physical Education curriculum area is often referred to as having the most valuable skills you can learn for life – (by learning;) teamwork, sportsmanship, peer friendships, cooperation, leadership, self-esteem, self-confidence, personal identity and self-worth. Even though students may be fully involved in sport outside of school they can still benefit in these areas during PE.

Interpersonal skills: (Respect for diversity and cultures, care and concern for others, social justice, communication skills, tolerance):- These are many interpersonal skills and qualities we want to instil in our students as well as the idea of being physically active.

Most of these benefits are not measurable but clearly lead to a more productive and healthy life style.

We hope as parents you can help us to help you instil these skills in your child while they attend Mt Roskill Grammar. So please next time your son/daughter asks for a note to be excused from Physical Education, think twice before giving it. Physical Education is no different to any other subject – you wouldn't think of asking your child to be excused from Maths or English, why PE?

Are your child's medical records with the school up to date, has their PE teacher been informed of any medical issues that might need to be recognised in a PE class? When you enrolled you gave us good information about your child's health. Please keep it up to date.

Please contact Mrs Bennett HOD Physical Education extension 824 if you have any areas in the Physical Education curriculum you would like to discuss.

## SPORT

We have had another busy start to the year with sign up days being held for the Summer Sports. Students are encouraged to participate in extra-curricular activities as a way of contributing to school life, developing friendships with others, and improving their skills and knowledge in a wide range of activities. Summer Sports start in the next couple of weeks with some seasons stretching into Term 4. The sign up for Winter Sports will be held on April 2. To see a full list of the activities available, draws and results, please visit the school website - [www.mrgs.school.nz](http://www.mrgs.school.nz) - and click on Co-curricular.

### Volleyball:

The Senior Girls Volleyball team have qualified for the Premier Grade of the Auckland Competition. Their first matches were against Long Bay College and McAuley High School and despite their best efforts they lost both matches. However, MRGS showed good spirit when they managed to take a set off both teams. The team is coached by Fale Malifa, a parent of a current pupil.

### Cricket:

The 1<sup>st</sup> XI Boys team has played two games with comprehensive victories over Kristin and Westlake Boys. MRGS scored 187/8, with Nikhil Gupta top scoring with 45 not out. Kristin managed to score 137 all out with Year 10 student Kashyap Choudhary taking 4 wickets for 24 runs on debut. Against Westlake, the opposition scored 179/9 with MRGS chasing down the target with 3 wickets remaining. The team is coached by Ben Purvis and managed by Paul Thompson, who is also a parent of a current pupil.

### Coaching Opportunities:

We are currently seeking parents and ex-pupils to assist with coaching of teams. If you have a passion for sport and would like to give something back to the school please do not hesitate to contact Mr Ben Horne (Director of Sport) on 6210050 extension 891 or [ben.horne@mrgs.school.nz](mailto:ben.horne@mrgs.school.nz). You may want to coach, manage, transport or simply attend games.

### Sports Fees:

It is vital that all students pay their sports fees promptly. The sports fees cover entry costs, transport, hireage of facilities and upgrading of equipment and uniforms. There is financial assistance available but students need to be proactive. See Mr Horne for more information.

### Sponsorship Opportunities:

There are countless opportunities for businesses to sponsor school sports teams at MRGS. Any assistance with the sports program would be much appreciated. Please contact Mr Ben Horne on 6210050 extension 891 or [ben.horne@mrgs.school.nz](mailto:ben.horne@mrgs.school.nz).

## PERSONAL ELECTRONIC DEVICES AT SCHOOL

A reminder to all students and their families that an electronic dictionary is the only personal electronic device that is allowed to be used in class. All other devices (cellphones, Ipods MP3 players etc) must be switched off as students enter the buildings at the start of the school day and may not be used or switched on again until they leave the buildings at the end of the school day. Any students who infringe this rule will have the equipment confiscated and parents/caregivers will be asked to collect the equipment from the school office. We ask families to support us in this means of ensuring a safe learning environment for all our students.

## STUDENT EMAIL ADDRESSES

As part of our school vision of successful powerful learners who are active and responsible citizens, we want our school community to be proactive participants in learning both within and beyond the classroom.

Computer technology and e-Learning play a vital role in broadening the learning opportunities of us all. At Mt. Roskill Grammar School, we encourage the responsible use of new technologies to extend learning beyond the classroom in a number of ways. Our school's learning management system known as "i-Learn" is now well established. This is an online space where students can access course materials, homework, sit online assessments and communicate in a number of learning forums. I-Learn links to an array of online relevant and interactive content related to learning and we see it as Mt. Roskill Grammar School's online place for students and the wider school community.

This year each student will be issued with a school email address. This address will allow students to take a more active role in our online learning community, to store and share their learning with peers and teachers and will make it easier for them to request and receive information and feedback on their learning. The student addresses and passwords will be issued to students in late February and are covered by the internet safety agreements that each student has signed when they enrolled and started at the school.

Further details:

- You can view iLearn at <http://ilearn.mrgs.school.nz>
- Student emails will have the format: [firstname.lastnameDnumber@mrgs.school.nz](mailto:firstname.lastnameDnumber@mrgs.school.nz) No hyphens, spaces or apostrophes will be included.  
eg: A student called "Joseph Bloggs-Johnston" whose school ID is 10846 would have the address [joseph.bloggsjohnston10846@mrgs.school.nz](mailto:joseph.bloggsjohnston10846@mrgs.school.nz).
- The address is intended for uses relevant and appropriate to teaching and learning and any misuse of student addresses should be brought to our attention.
- The school can view, suspend or reset the passwords of any student account at any time for any reason or at the request of the parent or caregiver.
- If you have any queries about the use of e-Learning of ICT, please do not hesitate to contact the school.
- Please be reminded that our policies are in line with the guidelines of NetSafe. [www.netsafe.org.nz](http://www.netsafe.org.nz) and are covered by the internet safety agreements that each student has signed when they enrolled and started at the school.



## MAUNGAWHAU SCHOOL CELEBRATING 100 YEARS 1912-2012

**Centenary Dates: Friday March 30th and Saturday March 31st 2012**

Centenary information and registrations are open for past pupils / staff on the Maungawhau School website - [www.maungawhau.school.nz](http://www.maungawhau.school.nz) or registration forms are available from the school office – 43 Ellerton Rd, Mt Eden. Registrations close: 2<sup>nd</sup> March 2012. Contact Rachealle Tyrell on 6388829 or email [centenary@maungawhau.school.nz](mailto:centenary@maungawhau.school.nz) for centenary enquiries.

Thank you in advance and please do not hesitate to contact Rachealle Tyrell on 6388829 extension 104 if you have any queries.

## IMPORTANT DATES DATES FOR YOUR DIARY

TERM 1		
<b>February</b>	Tuesday 21	Athletics Carnival
	Thursday 23	Parents of New Students Meeting
	Monday 27 – Friday 2 March	Year 13 Camp
<b>March</b>	Wednesday 7	NCEA Evening
	Monday 12	Campus MERGE Meeting – School closes at 2.30pm
	Wednesday 14 – Saturday 17	ASB Polyfest
	Thursday 22	Pasifika Families Evening
	Tuesday 27	Excellence Awards Evening
	Wednesday 28	Whanau Hui – 5.30-7.00pm
	Thursday 29	Junior Parent Report Evening
	Thursday 29	Senior Parent Report Evening
<b>April</b>	Wednesday 4	
	Thursday 5	<b>END OF TERM 1</b> Closing time 3.10pm
<b>May</b>		<b>BEGINNING OF TERM 2</b>
TERM DATES 2012		
<b>Term 1</b>	Tuesday 31 January	Thursday 5 April
<b>Term 2</b>	Monday 23 April	Friday 29 June
<b>Term 3</b>	Monday 16 July	Friday 28 September
<b>Term 4</b>	Monday 15 October	Tuesday 11 December