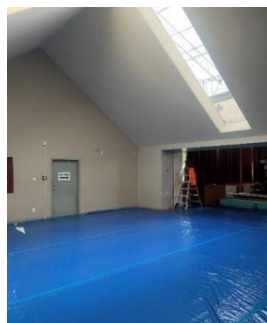


July 2021: Term 3, Week 1

## From the Principal



Ngā mihi nui kia koutou,

Whether it be in sports, learning, or projects I have always been a fan of a quick start, building up early momentum, rather than taking it easy and trying to catch up later. This term we are focusing on making quality starts to each lesson so that learning momentum is maintained throughout every day. Our teachers will start each lesson with the learning intention (purpose) clearly outlined and an activity (he mahi) for students to do immediately and 'warm up' for learning.

We expect students to be at the lesson on time, correctly presented in uniform, and starting their learning without hesitation. Families can help by ensuring that students are at school in plenty of time to start the first lesson at 9.00am. There has been drift in some student's arrival time and we ask that schedules are reprioritised to ensure everyone can start their learning on time together. Establishing momentum at the start of every lesson will put us ahead of the learning curve and enable great success during the term.

We have welcomed Head of Classics Mrs Singh to the Senior Leadership Team for the remainder of the year. She is working with Rutherford House Deans Mr Syme, Ms Bates, and Mr Coker and her responsibilities include overseeing student leadership and prize-giving. On the first day of term our kapa haka lead a big group from our school to support Mr Pemerika at the pōwhiri to welcome him as Principal of Michael Park School in Ellerslie. We will miss his vitality and caring presence and wish him every success in his new role.

Over the next two or three years a number of buildings in the school will be remediated, rejuvenated, and refreshed. We expect work on our Whare to be completed for term 4. This work includes re-roofing, restoration of the carvings, and repositioning of the windows. In term 4 work will begin on developing a new Performing Arts classroom and re-locating our Learning Extension Department, both in H Block.

We remain watchful as Covid-19 continues to disrupt our close international neighbours. Students can help by ensuring that they are equipped and conversant with learning on-line so that at any time we can make a quick transition to off-site learning if needed.

Ngā manaakitanga  
Greg Watson  
Principal

## School Board

Looking ahead at the calendar for this term our taura will be involved in a range of academic, music and sporting pursuits. I am always proud of how our students represent our school, their whānau and themselves.

It is exciting that our property projects are gaining momentum and I would like to thank the Board, Mr Watson, Mr Pemerika, Mrs Gaudin and our Property Manager Steven Reid for their commitment to providing excellent facilities for our taura. The learning that happens inside the new buildings will also continue to be of the highest quality.



**Marjet Pot**  
**Presiding Member**

## Important dates for your diary

Mon 2 – Wed 4 Aug	Immunisations
Tue 10 Aug	Teacher only day (NCEA Accord Day)
Wed 25 & Thu 26 Aug	Sports team Photos
Thu 26 Aug	Term 3 Junior Report Evening
Fri 27 Aug	School holiday, school closed
Mon 30 Aug – Fri 3 Sep	Winter Tournament Week
Mon 13 – Wed 29 Sep	NCEA Subject Entry Exams
Thu 30 Sep	Sports Awards Evening
Fri 1 Oct	End of Term 3

## Attendance

A reminder that regularly attending school increases every student's chances of academic achievement. If your child is absent for an unavoidable reason such as illness or bereavement please notify our school attendance officer either by phone on **6210069** or by email [attendance@mrgs.school.nz](mailto:attendance@mrgs.school.nz)

We encourage you to make non-urgent appointments outside of learning time but if your child must leave school early for an appointment please contact the attendance officer **before 9.30am** to ensure your child receives their leaving pass.

## Uniform

To support each student's return to school we would like to outline the uniform expectations. Our current uniform expectations are outlined on our website and can be accessed by using the link below:

<https://www.mrgs.school.nz/school-uniform/>

A particular focus will be on

- Correct footwear - sandals are not currently part of the MRGS uniform
- Regulation jumpers and jackets
- MRGS bucket hat or cap only
- Facial hair - clean shaven

Senior members of staff and house deans will be checking uniform as students arrive at school. In Week 1 entry to school will only be via the Deans Centre Gate. If there are uniform concerns you will be emailed to ensure you are informed as soon as possible. If whānau need further support please contact your House Deans.

Incorrect uniform items worn in school will be confiscated and returned to students on Friday after 3.05pm as per the school guidelines.

We ask that whānau support our school's expectations and look forward to a great term ahead.

## Term 3 Report Evening

The Term 3 Report Evening for caregivers of students in year 9 and 10 will be held on Thursday 26<sup>th</sup> of August from 4.00pm - 7.00pm. This is an opportunity to meet with subject teachers and discuss progress and next steps. Each booking is 5 minutes and will be focussed on next steps for student to progress in their learning. Information on how to book will be made available in Week 2 with bookings open from the 13<sup>th</sup> August.

## Immunisations MMR, DTAP, HPV

Immunisations start in week 2 of this term. Students who have returned their immunisation forms with consent will come out of class to be immunised by an ADHB nurse. Each student will be monitored following their immunisation.

If the nurses are unable to process all students on Monday, Tuesday and Wednesday of week 2, the ADHB will return for additional days later in the term to ensure all students who have requested a vaccination are able to receive one.

## Smokefree

Mt Roskill Grammar School is a smoke free and vape free environment.

Students are not permitted to bring vapes to school or use them on site or when offsite in our school uniform.

## Contact details

It is really important for your child's Health and Safety and to ensure you are receiving all of our communications that we have up to date phone numbers and emails. If your contact details have changed can you please contact Reception - [admin@mrgs.school.nz](mailto:admin@mrgs.school.nz) to let us know.

## Winter Sport

### Winter Sport Continues

Just a reminder to all students and families that the winter sport seasons continue through Term 3. A lot of different Sports codes will have different finishing dates, some continue through the whole term however some teams will only have 3-5 weeks left of their competitions. Please speak to your coaches and managers to confirm training days and game times for the rest of your season.

### Winter Tournament Week coming up – Week 6

Winter tournament week is coming up in Week 6 of this term and we have a number of different teams competing across the week around Auckland and other parts of the North Island. Information and permission forms will be given out to students of these teams over the next week. If you have any questions about Winter Tournament Week, please speak with the teams' coaches and managers or the Sports Department.

# Values



Our school has three core values: Tūmanakotanga, Manaakitanga and Whanaungatanga.

We often reference these values in our communication with whānau and would like to re-share these with you as we start the second half of the year.

Clarity and consistency are vital for students to feel secure in what is expected of them. The values in action posters are in every classroom to support student understanding of how they can “walk the talk” of our values in each lesson.

In addition to our values in action being clear in the classroom we also have clear expectations about class transitions. Students are expected to be in class on time, in the correct uniform and ready to learn. On arrival teachers help students reflect on prior learning or introduce new vocabulary and the learning intentions are visible from the start of each lesson so that students can have confidence in what they need to do to progress their learning each

day.

With school wide routines and clarity of purpose students experience a reassuring consistency. We thank you for your support ensuring that your child is ready to learn.





## Term 2 Values Awards



### Manaakitanga

Even Habtom  
Kush Krishna  
Kauri Pokoina  
Jahleena Tapueluelu  
Mercy Tuifao  
Armaan Mohammed  
Prayna Varma  
Mary Vao  
Charry Hnin  
Ceiron Malifa  
Tualele Felise  
Renee Christian  
Daniel Ferguson

### Whanaungatanga

Ameena Naz  
Praise Paala  
Melody Liang  
Michelle Darman  
Markko Kennedy  
Abdul P A  
Kartik Nath  
Brooklyn Koonwaiyou  
Travis Noa  
Royale Tetai  
Jon Fau'ese  
Aaron Mendonca  
Celia Chanwong  
Shekinah Herewini  
Sonam Bagwe  
Oscar Mackenzie

### Tūmanakotanga

Ibrahim Hameedi  
Vavega Tuiutulua  
Daniel Cowan  
Jinitha Hewa  
Eldana Habtom  
Melanie Sands  
Sione Valita  
Matthew Brooks  
Caroline Aleki  
Teniqua Oldenampsen  
Edward Beaumont  
Apoor Miller  
Aarya Patel  
Quancee Nathan  
Adrian Cruz  
Josio Tiata  
Maja Skilling  
Samantha Tang  
Zachrey ZhiYuan Zhu  
Freya Grant  
Yousif Faisal

## NZ Secondary Schools Swimming Championships



Highlights from NZ Secondary Schools Swimming Championships:

- Ethan Stocks set a New Auckland Age Group Record 200m Backstroke and overall won 3 Gold Medals, 3 Silver Medals and 1 Bronze
- Daniel Kregting a Silver Medal in 200m Butterfly and Bronze in 400m Freestyle
- 3 Gold Medals, 4 Silver Medals, 2 Bronze Medals, 13 additional Top 10 Placings, One Auckland Age Group Record and 11th Co-ed School Overall

We had a team of eight swimmers participating – Andre Chan, Jinitha Hewa, Saniru Hewa, Daniel Kregting, Astrid Kyle, Finn Orsbourn, Ethan Stocks and Alex Winn. All swimmers represented the school well and improved their times.

Thank you to all the staff and coaches – Miss Good, Josh Munro and Bridget Sills.

## Under 19 Auckland Number One Badminton Team



Ian Busby (Far right in the photo) is a player in the U19 Auckland Number one Badminton team that won the National title at the Inter-association Junior team Championship this week. They beat North Shore 5-4 in the Final.

## MRGS School Badminton

In the Thursday Badminton C grade Competition, St Pauls College and Mt Roskill Grammar had a close final with Roskill winning Gold in the last match. Mrs Naidu's team finished third. New competitions in B/C grades begin this term.





Najmo Mohamed, 2018

For World Refugee Day, New Zealand Cross is acknowledging the important contribution made during the COVID-10 Alert. Congratulations to Najmo Mohamed who has played a key role in helping people navigate change and uncertainty. At only twenty, the former refugee's first-ever job became one of the most highly valued during the pandemic.



# ElizabethMichael UNIFORMS

Please allow for 6 weeks for delivery of Made-to-Measure school uniforms

## Special Fittings for Mt Roskill Grammar Uniforms

Elizabeth Michael Uniforms offers a Made-to-Measure service at no extra cost to those students who fall outside our school uniform size range (please see side panel).

In order to be able to offer this service we need all students to visit us at our Elizabeth Michael Uniforms, 4 Bond Street, Grey Lynn.

You must allow 6 weeks for your Made-to-Measure garment(s). During back to school this can be longer due to the Christmas and New Year holiday season so we encourage you to organise your Made-to-Measure garments before Christmas so they are booked into production.

All student's who do require this service must visit us at Elizabeth Michael Uniforms.

Please phone us on 09 358 1680 ext 8 to book in your Made-to-Measure session with our in-house experts.

Elizabeth Michael Uniforms is open 6 days a week:

Monday - Friday	9am - 5pm
Friday	9am - 4pm
Saturday	9am - 12pm

Please note our special fitting service is available on Tuesday - Thursday only.

4 Bond Street, Grey Lynn, Auckland  
P: 09 358 1680 • F: 09 358 1685 • uniforms@elizabethmichael.co.nz  
www.elizabethmichael.co.nz

Orders for Made-to-Measure school uniforms need to be placed before Christmas for back-to-school.

- Are you exceptionally tall or have very long arms for your age?  
*i.e. the length of sleeves or body length in regular clothes is usually an issue for you?*
- **GIRLS** are you smaller than a size 4 or larger than a size 22?
- **BOYS** are you smaller than a 64cm waist or a 2XS shirt?
- **BOYS** are you larger than a 132cm waist or a 5XL shirt?
- Please note all Elizabeth Michael garments are 'adult' sizes.

All uniforms are to be paid in full at the Mt Roskill Grammar Uniform shop before you come to Elizabeth Michael Uniforms to be measured. An invoice or docket will need to be presented at the time of the fitting.

- This service is offered to those who require a "Made-to-Measure" service, we do not make special garments for minor differences.
- Hem and sleeve shortening is the responsibility of the individual. Elizabeth Michael Uniforms do not offer an alteration service for standard size garments.

# EATSMART

## DAILY DEALS

SEE SELECTION AVAILABLE



Fresh Wraps from \$4.50  
Sandwiches from \$3.00  
Filled Rolls from \$5.00  
Pasta Dishes from \$4.50  
Noodle Dishes from \$4.50  
Rice Dishes from \$5.00

## BLACKBOARD SPECIALS

Ask our friendly staff at the tuckshop what the Blackboard Special of the day is!



Certified every day foods Vegetarian option available

See the fridges and cabinets at the tuckshop for the full selection available and ask about our gluten free options!

## THE CLASSICS

Hash Brown \$1.00  
Chicken Tender \$2.50  
Garlic Bread from \$2.50  
Wedges \$3.50  
Cheese Burger \$4.50  
Chicken Burger \$6.00

## LOOSE CHANGE

Baked Items from \$2.50  
Cookies \$3.00  
Ice Creams from \$2.00  
Juicies & Moosies \$2.50  
Drinks from \$2.30

ORDER ONLINE @ [WWW.LUNCHORDERS.CO.NZ](http://WWW.LUNCHORDERS.CO.NZ)



## How to find out more from MRGS



[www.mrgs.school.nz](http://www.mrgs.school.nz)



[www.facebook.com/MountRoskillGS](https://www.facebook.com/MountRoskillGS)



mountroskillgrammarschool



Mt Roskill Grammar School

## MRGS School App



Keep up to date with the MRGS App.

1. From your device go to the App Store/Play Store.
2. Search for "School Stream" and tap the install button.
3. You will be prompted to accept push notifications - select OK.
4. Type Mount Roskill Grammar School into the search bar then select it.

The App will give you access to daily notices and newsletters as well as allowing you to update personal details and notify the school about absences.

# Homework Centres

Subject Area	Times	Venue	Description	Teacher in Charge
<b>Catch Up</b> All subjects	Tuesday 3:20- 5:30	Learning Extension	Students seeking help and support for any subject should attend the Homework Club or “Catch Up” time at LXTN. Some snacks are available to keep you going.	MKT/LEN
<b>Māori</b>  <b>All subjects</b>	Thursday  3:15- 4:30	Library	Students seeking help and support for any subject should attend our Māori Homework Centre Puna Wānanga. It will be held in the Library while our Whare is being renovated. Kai is also provided.	REW/MNC/ TWL/SYD/RJJ
<b>ESOL</b>	Wednesdays 3:15 - 4:15	R6	Assistance with ESL, NL homework. Support for English Language Learners in mainstream English. A quiet place to study after school.	RYJ/YAN
<b>Mathematics</b>	Wednesdays 3:15 - 4:15 Thursday 3:15---4:15	R9, A18, A7  A10, A20, A21	Y12's Y13 Calculus Students Juniors, Year 11's & Y13 Statistics A range of maths teachers are available Chromebooks available	SBV
<b>Tongan Homework Centre</b>	Wednesday 6:00-8:00 pm	D11	All levels in all subjects. Started two weeks ago & runs every Wednesday without fail. Very dedicated experienced tutors. Any other students needing help are welcome. Cheese & crackers available at the end of session.	TNG
<b>Languages</b>	Wednesdays 3:15 - 4:15	R3	Japanese (included in R-Block Homework Centre)	KOJ
<b>Computer Science/Digital Technologies</b>	Thursdays 3:15 - 4:15	B7	Help with work from any Year Levels and opportunities for students to catch up on work not completed in class.	NLL
<b>History</b>	Tuesday Lunchtime	C3	Any help with assessments or questions about the course work can be answered.	HTG
<b>English</b>	Tuesday 3.15-4.30	H6	Any help with assessments or questions about the course work can be answered.	GYC
<b>Media</b>	Wednesday 3:00-4:30	T7	Supervised assistance with homework and computers available for editing	HPK
<b>Chemistry</b>	Thursday lunchtime	S6	Chemistry teachers are available to help with any Level 2, 3 or scholarship chemistry.	MCS
<b>Visual Arts</b>	Tuesday 3.20- 4-20	A13 to A16	Supervised homework, students can get help from teachers. All other days after school and lunchtimes students can use facilities to work by themselves	GRO
<b>Performing Arts</b>	–	Studio	Always happy to sit with individuals and families anytime with a previous booking to go over any work. THT students can join the Technology Homework Centre.	GSE
<b>Technology</b>	Thursday 3.20- 4.45	D4	Help with portfolios in DSM and DVC as well as non-practical work from TMM, BCT and TCE.	PGD
<b>Music</b>	Monday - Thursday lunchtimes	Music Block	The Music Block is open to all Music students to practise or work in the computer lab. There is always at least one teacher on duty and available to help.	HDN





## We value freedom of choice

All children develop in their own way, and we make sure that our care reflects this. We encourage free play, exploration, and creation. Celebrating culture and each child's individuality is important at our centre, as we aim to create learners who are both proud of their own identity and supportive of their peers.

### Why choose us

- Excellent child-teacher ratios
- We take pride in our quality facilities
- 27 years experience
- Home away from home environment
- Celebrating diversity
- Qualified staff

*Spaces available for all ages. Enquire now*



### CONTACT US

**Ph:** +64 9 629 0732

**E:** [admin.mrecc@mrgs.school.nz](mailto:admin.mrecc@mrgs.school.nz)

**W:** [mountroskillearlychildhood.co.nz](http://mountroskillearlychildhood.co.nz)

60 Somerset Road,  
Auckland 1041